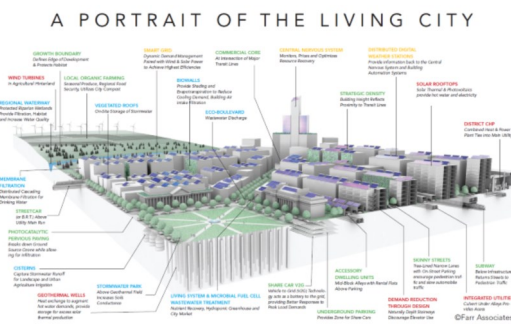




# MS in Environmental Engineering and Science

*Transformative Education • Innovative Engineering • Problem Solving*

- Explore critical issues:
  - Resource and energy recovery
  - Water scarcity and quality
  - Environmental microbiome and “omics”
  - Urban eco-cycles
  - Antimicrobial resistance
- Make industry contacts and network through seminars and career Fairs



**WHY YOU SHOULD APPLY:** Environmental Engineers are at the helm of the urban environment. Engineers design original new infrastructure systems based on ecological principles to create adaptive, resilient, and sustainable districts. The MS curriculum in Environmental Engineering and Science at Northwestern provides the tools and methods for this renaissance through a series of 12 courses.

**HOW TO APPLY:** APPLY AT [WWW.APPLYWEB.COM/NUGRAD/INDEX.FTL](http://WWW.APPLYWEB.COM/NUGRAD/INDEX.FTL)

APPLICATIONS ARE DUE AT THE END OF FALL TERM. DECISIONS WILL BE MADE AND APPLICANTS WILL BE NOTIFIED STARTING IN FEBRUARY.

EMAIL QUESTIONS TO: [MS-EES@NORTHWESTERN.EDU](mailto:MS-EES@NORTHWESTERN.EDU), FIND US ON [TWITTER @CEE\\_NWU](https://twitter.com/CEE_NWU)

# MS IN EES @ NU

## CIVIL AND ENVIRONMENTAL ENGINEERING

### *Weaving the Fabric of Resilient Cities*

The MS in Environmental Engineering and Science at Northwestern is designed to train professionals to address the wide range of issues that stem from the development of sustainable urban communities.

The program promotes cross-disciplinary courses that are essential for professionals whose work will define the reinvention of the Urban Infrastructure. The program builds on the strengths of the Environmental Engineering Faculty and professionals who support the only

#### EES Fundamentals

Series of 6 courses devised to provide students with the core knowledge required to design sound solutions. They encompass: chemistry, microbiology/microbiome, transport processes, modeling, and policy.

#### Interdisciplinary Courses

EES students enroll in courses that bridge key components of Civil and Environmental Systems, such as high performance structural architecture, sustainable urban developments, infrastructure systems analysis, and minors in either management, computational methods, or entrepreneurship.

#### Seminars & Career Fair

EES students attend weekly seminars on exciting findings regarding pressing contemporary issues from speakers in either academia or various industries and governmental organizations. The department organizes two career fairs to connect students to employers.

#### Community Based Design Research

EES students have the opportunity to work with a faculty mentor on environmental design projects for local communities within the Chicago region. For students interested in an MS thesis, short-term research projects in faculty research laboratories imply an extended stay compared to a course-based MS.

APPLICATION WEBSITE: [WWW.APPLYWEB.COM/NUGRAD/INDEX.FTL](http://WWW.APPLYWEB.COM/NUGRAD/INDEX.FTL)

EMAIL QUESTIONS TO [MS\\_EES@NORTHWESTERN.EDU](mailto:MS_EES@NORTHWESTERN.EDU)

FIND US ON TWITTER @CEE\_NWU